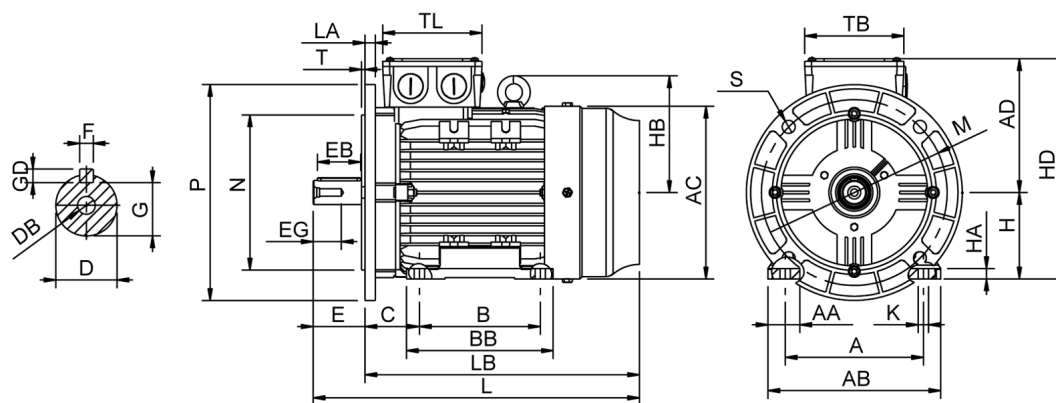


# Data Sheet

Itemnumber.....: 6020800400



A = 125	AC = 157	BB = 125	DB = M6	EG = 16	GD = 6	HD = 203	LA = 9	N = 130	T = 3,50
AA = 32	AD = 123	C = 50	E = 40	F = 6	H = 80	K = 10	LB = 256	P = 200	TB = 110
AB = 154	B = 100	D = 19	EB = 32	G = 15,50	HA = 10	L = 296	M = 165	S = 4-Ø12	TL = 110

## Version

Type.....: HMA4 80M1-2  
Design.....: Induction motor  
Standard series.....: IEC 60034  
Phase / Voltage range.....: 3~ / Low

## Electrical design

Efficiency.....: IE4  
Pole.....: 2  
Power at 50 Hz (kW).....: 0,75  
Hz.....: 50  
Voltage.....: 230VD/400VY  
Winding voltage.....: 230VD/400VY 50 Hz  
Power output (kW).....: 0,75  
Duty.....: S1  
Insulation class.....: F  
Temperature rise.....: B

## Mechanical design

Frame size.....: 80  
Mounting.....: B35  
Rain cap.....: No  
Protection class.....: IP55  
Cooling method.....: IC411/TEFC  
External grounding.....: Yes  
Drain hole.....: Yes  
Frame material.....: Aluminium  
Material approval.....: None  
Shaft.....: IEC standard  
Key.....: Closed key  
Balancing.....: Half key balancing  
Vibration class.....: Grade-A  
Weight (kg).....: 12,0

## Environment condition

Ambient temp. min. (°C).....: -20  
Ambient temp. max. (°C).....: 40  
Altitude (mtr up to).....: 1000

## Bearing

DE Bearing.....: 6204-ZZ/C3  
NDE Bearing.....: 6203-ZZ/C3  
Fixed bearing.....: DE

## Terminal box

Tbox position.....: Top  
Cable entry direction.....: Right (from DE)  
Cable entry  
Main.....: 2 x M20x1,5  
Plastic blindcaps  
Accessory.....: 1 x M12x1,5  
Plastic blindcap  
Terminal board thread.....: M4

## Test values

Rotor inertia (kgm²).....: 0,0010  
Noise level (dB(A)).....: 55  
Starting time (sec.).....: 0,03

## Motor protection

Thermal protection main.....: PTC 3x 155 dgr  
Thermal protection second..: None  
Space heater.....: None None  
Temperature detector.....: No  
SPM.....: No  
IR wire.....: No  
Tropical insulation.....: No

## Explosion protection

According to.....: None  
Type of protection.....: None

## General

Direction of rotation.....: CW  
Painting.....: RAL 9005  
Nameplate.....: Multivoltage  
Special packing.....: No  
Special requirements.....: No

Rated power (kW) . . . . .	0,75	0,73	0,90	0,87
Frequency (Hz) . . . . .	50	50	60	60
Voltage (V) . . . . .	230 400	220 380	280 480	440
Connection . . . . .	D Y	D Y	D Y	Y
Full load current (A) . . . .	2,90 1,66	3,00 1,72	2,90 1,66	1,72
Speed (rpm) . . . . .	2870	2870	3440	3440
Power factor cos(phi) . . . .	0,78	0,79	0,78	0,80
Efficiency, 100/75/50 (%) . .	83,5/84,6/83,1	83,5/84,6/83,1	83,5/84,6/83,1	82,3/83,5/81,9
Ist/In . . . . .	7,30	6,40	7,30	6,70
Full load torque (Nm) . . . .	2,50	2,42	2,50	2,42
Tst/Tn . . . . .	4,60	4,30	4,60	4,00
Tmax/Tn . . . . .	3,90	3,65	3,90	3,40
Duty . . . . .	S1	S1	S1	S1
Ambient temp. (°C) . . . . .	40	45	40	45