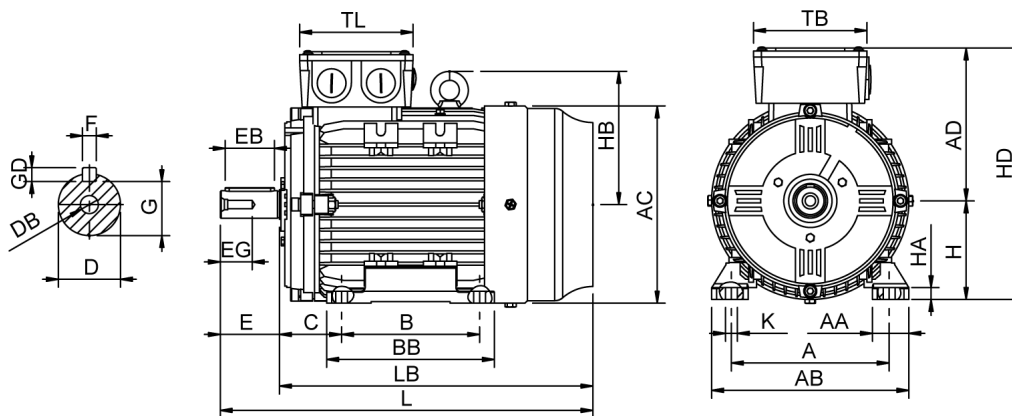


Data Sheet

Itemnumber.....: 6020801100



A = 125	AC = 157	BB = 125	DB = M6	EG = 16	GD = 6	HD = 203	LB = 256
AA = 32	AD = 123	C = 50	E = 40	F = 6	H = 80	K = 10	TB = 110
AB = 154	B = 100	D = 19	EB = 32	G = 15,50	HA = 10	L = 296	TL = 110

Version

Type.....: HMA4 80M2-2
Design.....: Induction motor
Standard series.....: IEC 60034
Phase / Voltage range.....: 3~ / Low

Electrical design

Efficiency.....: IE4
Pole.....: 2
Power at 50 Hz (kW).....: 1,10
Hz.....: 50
Voltage.....: 230VD/400VY
Winding voltage.....: 230VD/400VY 50 Hz
Power output (kW).....: 1,10
Duty.....: S1
Insulation class.....: F
Temperature rise.....: B

Mechanical design

Frame size.....: 80
Mounting.....: B3
Rain cap.....: No
Protection class.....: IP55
Cooling method.....: IC411/TEFC
External grounding.....: Yes
Drain hole.....: Yes
Frame material.....: Aluminium
Material approval.....: None
Shaft.....: IEC standard
Key.....: Closed key
Balancing.....: Half key balancing
Vibration class.....: Grade-A
Weight (kg).....: 13,0

Environment condition

Ambient temp. min. (°C).....: -20
Ambient temp. max. (°C).....: 40
Altitude (mtr up to).....: 1000

Bearing

DE Bearing.....: 6204-ZZ/C3
NDE Bearing.....: 6203-ZZ/C3
Fixed bearing.....: DE

Terminal box

Tbox position.....: Top
Cable entry direction.....: Right (from DE)
Cable entry
Main.....: 2 x M20x1,5
Plastic blindcaps
Accessory.....: 1 x M12x1,5
Plastic blindcap
Terminal board thread.....: M4

Test values

Rotor inertia (kgm²).....: 0,0010
Noise level (dB(A)).....: 55
Starting time (sec.).....: 0,02

Motor protection

Thermal protection main.....: PTC 3x 155 dgr
Thermal protection second.....: None
Space heater.....: None None
Temperature detector.....: No
SPM.....: No
IR wire.....: No
Tropical insulation.....: No

Explosion protection

According to.....: None
Type of protection.....: None

General

Direction of rotation.....: CW
Painting.....: RAL 9005
Nameplate.....: Multivoltage
Special packing.....: No
Special requirements.....: No

Rated power (kW)	1,10	1,06	1,32	1,28
Frequency (Hz)	50	50	60	60
Voltage (V)	230 400	220 380	280 480	440
Connection	D Y	D Y	D Y	Y
Full load current (A)	4,30 2,48	4,45 2,55	4,30 2,48	2,55
Speed (rpm)	2880	2880	3450	3450
Power factor cos(phi)	0,75	0,76	0,75	0,78
Efficiency, 100/75/50 (%)	85,2/85,3/83,7	85,2/85,3/83,7	85,2/85,3/83,7	84,2/84,3/82,6
Ist/In	8,30	7,30	8,30	7,65
Full load torque (Nm)	3,65	3,55	3,65	3,55
Tst/Tn	4,80	4,45	4,80	4,15
Tmax/Tn	4,20	3,90	4,20	3,65
Duty	S1	S1	S1	S1
Ambient temp. (°C)	40	45	40	45