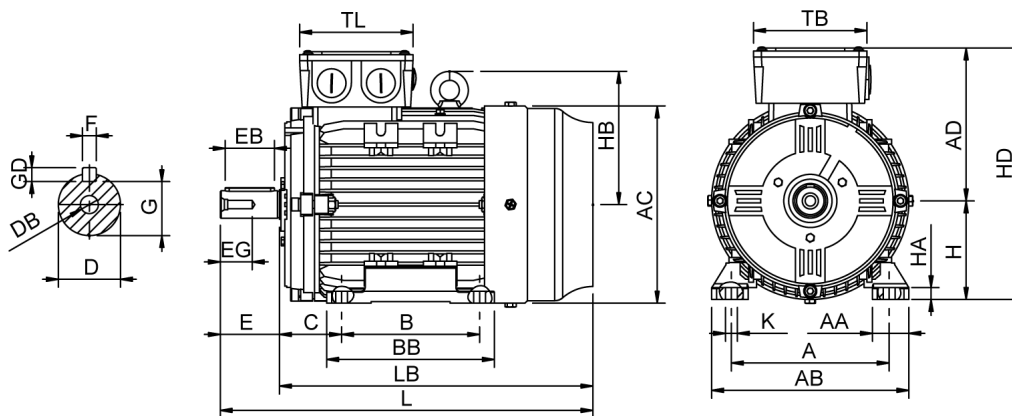


Data Sheet

Itemnumber.....: 6021000100



A = 160	AC = 199	BB = 170	DB = M10	EG = 28	GD = 7	HB = 135	L = 418	TL = 115
AA = 37	AD = 159	C = 63	E = 60	F = 8	H = 100	HD = 259	LB = 358	
AB = 200	B = 140	D = 28	EB = 50	G = 24	HA = 12	K = 12	TB = 115	

Version

Type.....: HMA4 100L-2
Design.....: Induction motor
Standard series.....: IEC 60034
Phase / Voltage range.....: 3~ / Low

Electrical design

Efficiency.....: IE4
Pole.....: 2
Power at 50 Hz (kW).....: 3,00
Hz.....: 50
Voltage.....: 230VD/400VY
Winding voltage.....: 230VD/400VY 50 Hz
Power output (kW).....: 3,00
Duty.....: S1
Insulation class.....: F
Temperature rise.....: B

Mechanical design

Frame size.....: 100
Mounting.....: B3
Rain cap.....: No
Protection class.....: IP55
Cooling method.....: IC411/TEFC
External grounding.....: Yes
Drain hole.....: Yes
Frame material.....: Aluminium
Material approval.....: None
Shaft.....: IEC standard
Key.....: Closed key
Balancing.....: Half key balancing
Vibration class.....: Grade-A
Weight (kg).....: 27,0

Environment condition

Ambient temp. min. (°C).....: -20
Ambient temp. max. (°C).....: 40
Altitude (mtr up to).....: 1000

Bearing

DE Bearing.....: 6306-ZZ/C3
NDE Bearing.....: 6205-ZZ/C3
Fixed bearing.....: DE

Terminal box

Tbox position.....: Top
Cable entry direction.....: Right (from DE)
Cable entry
Main.....: 2 x M25x1,5
Plastic blindcaps
Accessory.....: 1 x M20x1,5
Plastic blindcap
Terminal board thread.....: M5

Test values

Rotor inertia (kgm²).....: 0,0050
Noise level (dB(A)).....: 63
Starting time (sec.).....: 0,04

Motor protection

Thermal protection main.....: PTC 3x 155 dgr
Thermal protection second.....: None
Space heater.....: None None
Temperature detector.....: No
SPM.....: No
IR wire.....: No
Tropical insulation.....: No

Explosion protection

According to.....: None
Type of protection.....: None

General

Direction of rotation.....: CW
Painting.....: RAL 9005
Nameplate.....: Multivoltage
Special packing.....: No
Special requirements.....: No

Rated power (kW)	3,00	2,90	3,60	3,50
Frequency (Hz)	50	50	60	60
Voltage (V)	230 400	220 380	280 480	440
Connection	D Y	D Y	D Y	Y
Full load current (A)	9,70 5,60	10,00 5,75	9,70 5,60	5,75
Speed (rpm)	2910	2910	3490	3490
Power factor cos(phi)	0,87	0,88	0,87	0,88
Efficiency, 100/75/50 (%)	89,1/88,9/87,5	89,1/88,9/87,5	89,1/88,9/87,5	88,3/88,1/86,6
Ist/In	11,4	10,00	11,4	10,4
Full load torque (Nm)	9,85	9,55	9,85	9,55
Tst/Tn	5,10	4,75	5,10	4,40
Tmax/Tn	4,60	4,30	4,60	4,00
Duty	S1	S1	S1	S1
Ambient temp. (°C)	40	45	40	45