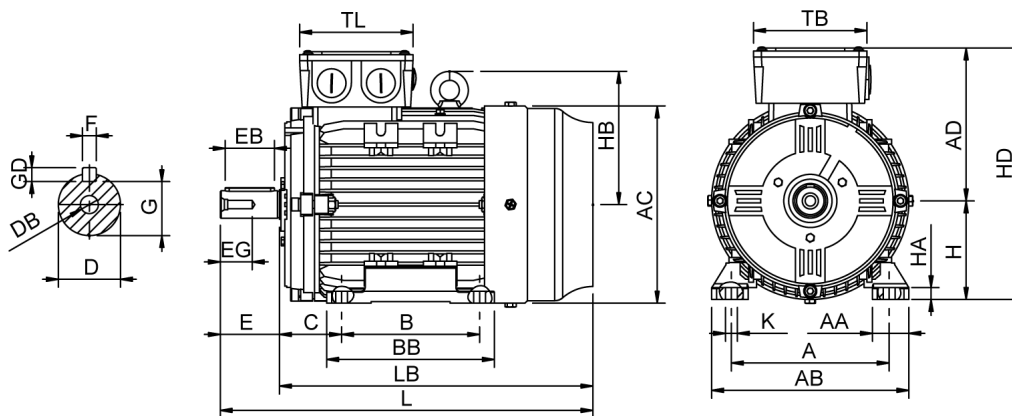


# Data Sheet

Itemnumber.....: 6040800100



A = 125	AC = 157	BB = 125	DB = M6	EG = 16	GD = 6	HD = 203	LB = 291
AA = 32	AD = 123	C = 50	E = 40	F = 6	H = 80	K = 10	TB = 110
AB = 154	B = 100	D = 19	EB = 32	G = 15,50	HA = 10	L = 331	TL = 110

## Version

Type.....: HMA4 80M2-4  
Design.....: Induction motor  
Standard series.....: IEC 60034  
Phase / Voltage range.....: 3~ / Low

## Electrical design

Efficiency.....: IE4  
Pole.....: 4  
Power at 50 Hz (kW).....: 0,75  
Hz.....: 50  
Voltage.....: 230VD/400VY  
Winding voltage.....: 230VD/400VY 50 Hz  
Power output (kW).....: 0,75  
Duty.....: S1  
Insulation class.....: F  
Temperature rise.....: B

## Mechanical design

Frame size.....: 80  
Mounting.....: B3  
Rain cap.....: No  
Protection class.....: IP55  
Cooling method.....: IC411/TEFC  
External grounding.....: Yes  
Drain hole.....: Yes  
Frame material.....: Aluminium  
Material approval.....: None  
Shaft.....: IEC standard  
Key.....: Closed key  
Balancing.....: Half key balancing  
Vibration class.....: Grade-A  
Weight (kg).....: 11,0

## Environment condition

Ambient temp. min. (°C).....: -20  
Ambient temp. max. (°C).....: 40  
Altitude (mtr up to).....: 1000

## Bearing

DE Bearing.....: 6204-ZZ/C3  
NDE Bearing.....: 6203-ZZ/C3  
Fixed bearing.....: DE

## Terminal box

Tbox position.....: Top  
Cable entry direction.....: Right (from DE)  
Cable entry  
Main.....: 2 x M20x1,5  
Plastic blindcaps  
Accessory.....: 1 x M12x1,5  
Plastic blindcap  
Terminal board thread.....: M4

## Test values

Rotor inertia (kgm²).....: 0,0050  
Noise level (dB(A)).....: 49  
Starting time (sec.).....: 0,04

## Motor protection

Thermal protection main.....: PTC 3x 155 dgr  
Thermal protection second..: None  
Space heater.....: None None  
Temperature detector.....: No  
SPM.....: No  
IR wire.....: No  
Tropical insulation.....: No

## Explosion protection

According to.....: None  
Type of protection.....: None

## General

Direction of rotation.....: CW  
Painting.....: RAL 9005  
Nameplate.....: Multivoltage  
Special packing.....: No  
Special requirements.....: No

Rated power (kW)	0,75	0,73	0,90	0,87
Frequency (Hz)	50	50	60	60
Voltage (V)	230 400	220 380	280 480	440
Connection	D Y	D Y	D Y	Y
Full load current (A)	3,15 1,80	3,25 1,86	3,15 1,80	1,86
Speed (rpm)	1440	1440	1730	1730
Power factor cos(phi)	0,70	0,72	0,70	0,73
Efficiency, 100/75/50 (%)	85,7/84,5/81,5	85,7/84,5/81,5	85,7/84,5/81,5	84,7/83,4/80,2
Ist/In	7,90	6,95	7,90	7,25
Full load torque (Nm)	4,95	4,80	4,95	4,80
Tst/Tn	5,00	4,65	5,00	4,35
Tmax/Tn	4,30	4,00	4,30	3,70
Duty	S1	S1	S1	S1
Ambient temp. (°C)	40	45	40	45