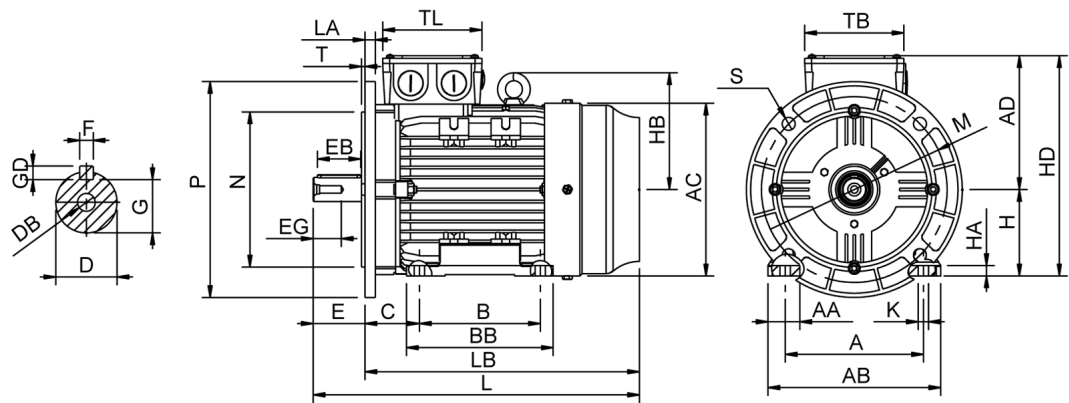


Data Sheet

Itemnumber..... 6040800400



A = 125	AC = 157	BB = 125	DB = M6	EG = 16	GD = 6	HD = 203	LA = 9	N = 130	T = 3,50
AA = 32	AD = 123	C = 50	E = 40	F = 6	H = 80	K = 10	LB = 291	P = 200	TB = 110
AB = 154	B = 100	D = 19	EB = 32	G = 15,50	HA = 10	L = 331	M = 165	S = 4-Ø12	TL = 110

Version Type..... HMA4 80M2-4 Design..... Induction motor Standard series..... IEC 60034 Phase / Voltage range..... 3~ / Low	Mechanical design Frame size..... 80 Mounting..... B35 Rain cap..... No Protection class..... IP55 Cooling method..... IC411/TEFC External grounding..... Yes Drain hole..... Yes Frame material..... Aluminium Material approval..... None Shaft..... IEC standard Key..... Closed key Balancing..... Half key balancing Vibration class..... Grade-A Weight (kg)..... 11,0	Bearing DE Bearing..... 6204-ZZ/C3 NDE Bearing..... 6203-ZZ/C3 Fixed bearing..... DE
Electrical design Efficiency..... IE4 Pole..... 4 Power at 50 Hz (kW)..... 0,75 Hz..... 50 Voltage..... 230VD/400VY Winding voltage..... 230VD/400VY 50 Hz Power output (kW)..... 0,75 Duty..... S1 Insulation class..... F Temperature rise..... B	Environment condition Ambient temp. min. (°C).. -20 Ambient temp. max. (°C).. 40 Altitude (mtr up to)..... 1000	Terminal box Tbox position..... Top Cable entry direction..... Right (from DE) Cable entry Main..... 2 x M20x1,5 Plastic blindcaps Accessory..... 1 x M12x1,5 Plastic blindcap Terminal board thread..... M4
Motor protection Thermal protection main.... PTC 3x 155 dgr Thermal protection second.. None Space heater..... None None Temperature detector..... No SPM..... No IR wire..... No Tropical insulation..... No		Test values Rotor inertia (kgm²)..... 0,0050 Noise level (dB(A))..... 49 Starting time (sec.)..... 0,04
Explosion protection According to..... None Type of protection..... None		
General Direction of rotation..... CW Painting..... RAL 9005 Nameplate..... Multivoltage Special packing..... No Special requirements..... No		

Rated power (kW)	0,75	0,73	0,90	0,87
Frequency (Hz)	50	50	60	60
Voltage (V)	230 400	220 380	280 480	440
Connection	D Y	D Y	D Y	Y
Full load current (A)	3,15 1,80	3,25 1,86	3,15 1,80	1,86
Speed (rpm)	1440	1440	1730	1730
Power factor cos(phi)	0,70	0,72	0,70	0,73
Efficiency, 100/75/50 (%) : 85,7/84,5/81,5		85,7/84,5/81,5	85,7/84,5/81,5	84,7/83,4/80,2
Ist/In	7,90	6,95	7,90	7,25
Full load torque (Nm)	4,95	4,80	4,95	4,80
Tst/Tn	5,00	4,65	5,00	4,35
Tmax/Tn	4,30	4,00	4,30	3,70
Duty	S1	S1	S1	S1
Ambient temp. (°C)	40	45	40	45