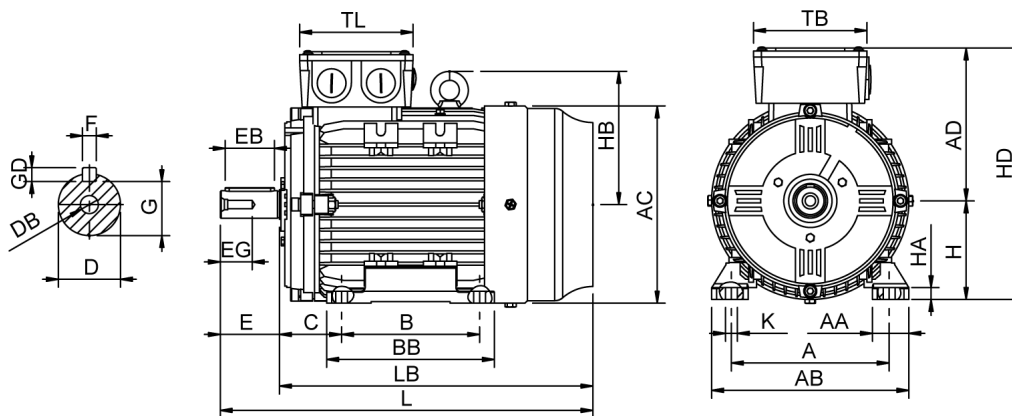


# Data Sheet

Itemnumber.....: 6040900100



A = 140	AC = 175	BB = 128	DB = M8	EG = 24	GD = 7	HD = 236	LB = 274
AA = 37	AD = 146	C = 56	E = 50	F = 8	H = 90	K = 10	TB = 115
AB = 180	B = 100	D = 24	EB = 40	G = 20	HA = 10	L = 324	TL = 115

## Version

Type.....: HMA4 90S-4  
Design.....: Induction motor  
Standard series.....: IEC 60034  
Phase / Voltage range.....: 3~ / Low

## Electrical design

Efficiency.....: IE4  
Pole.....: 4  
Power at 50 Hz (kW).....: 1,10  
Hz.....: 50  
Voltage.....: 230VD/400VY  
Winding voltage.....: 230VD/400VY 50 Hz  
Power output (kW).....: 1,10  
Duty.....: S1  
Insulation class.....: F  
Temperature rise.....: B

## Mechanical design

Frame size.....: 90  
Mounting.....: B3  
Rain cap.....: No  
Protection class.....: IP55  
Cooling method.....: IC411/TEFC  
External grounding.....: Yes  
Drain hole.....: Yes  
Frame material.....: Aluminium  
Material approval.....: None  
Shaft.....: IEC standard  
Key.....: Closed key  
Balancing.....: Half key balancing  
Vibration class.....: Grade-A  
Weight (kg).....: 14,0

## Environment condition

Ambient temp. min. (°C).....: -20  
Ambient temp. max. (°C).....: 40  
Altitude (mtr up to).....: 1000

## Bearing

DE Bearing.....: 6205-ZZ/C3  
NDE Bearing.....: 6204-ZZ/C3  
Fixed bearing.....: DE

## Terminal box

Tbox position.....: Top  
Cable entry direction.....: Right (from DE)  
Cable entry  
Main.....: 2 x M25x1,5  
Plastic blindcaps  
Accessory.....: 1 x M20x1,5  
Plastic blindcap  
Terminal board thread.....: M5

## Test values

Rotor inertia (kgm²).....: 0,0070  
Noise level (dB(A)).....: 51  
Starting time (sec.).....: 0,04

## Motor protection

Thermal protection main.....: PTC 3x 155 dgr  
Thermal protection second.....: None  
Space heater.....: None None  
Temperature detector.....: No  
SPM.....: No  
IR wire.....: No  
Tropical insulation.....: No

## Explosion protection

According to.....: None  
Type of protection.....: None

## General

Direction of rotation.....: CW  
Painting.....: RAL 9005  
Nameplate.....: Multivoltage  
Special packing.....: No  
Special requirements.....: No

Rated power (kW)	1,10	1,06	1,32	1,28
Frequency (Hz)	50	50	60	60
Voltage (V)	230 400	220 380	280 480	440
Connection	D Y	D Y	D Y	Y
Full load current (A)	4,15 2,40	4,30 2,46	4,15 2,40	2,46
Speed (rpm)	1440	1440	1730	1730
Power factor cos(phi)	0,76	0,77	0,76	0,78
Efficiency, 100/75/50 (%)	87,2/87,5/85,3	87,2/87,5/85,3	87,2/87,5/85,3	86,3/86,6/84,3
Ist/In	7,60	6,70	7,60	7,00
Full load torque (Nm)	7,25	7,05	7,25	7,05
Tst/Tn	3,80	3,55	3,80	3,30
Tmax/Tn	3,80	3,55	3,80	3,30
Duty	S1	S1	S1	S1
Ambient temp. (°C)	40	45	40	45