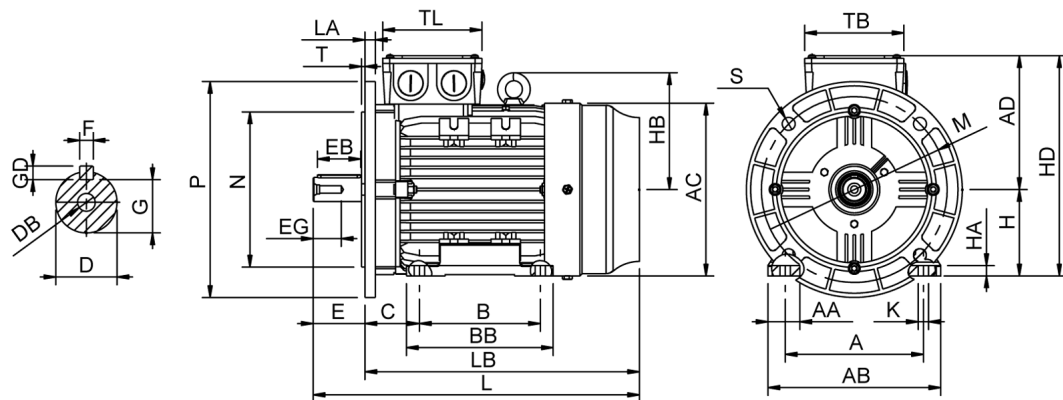


Data Sheet

Itemnumber.....: 6040900400



A = 140	AC = 175	BB = 128	DB = M8	EG = 24	GD = 7	HD = 236	LA = 10	N = 130	T = 3,50
AA = 37	AD = 146	C = 56	E = 50	F = 8	H = 90	K = 10	LB = 274	P = 200	TB = 115
AB = 180	B = 100	D = 24	EB = 40	G = 20	HA = 10	L = 324	M = 165	S = 4-Ø12	TL = 115

Version

Type.....: HMA4 90S-4
Design.....: Induction motor
Standard series.....: IEC 60034
Phase / Voltage range.....: 3~ / Low

Electrical design

Efficiency.....: IE4
Pole.....: 4
Power at 50 Hz (kW).....: 1,10
Hz.....: 50
Voltage.....: 230VD/400VY
Winding voltage.....: 230VD/400VY 50 Hz
Power output (kW).....: 1,10
Duty.....: S1
Insulation class.....: F
Temperature rise.....: B

Mechanical design

Frame size.....: 90
Mounting.....: B35
Rain cap.....: No
Protection class.....: IP55
Cooling method.....: IC411/TEFC
External grounding.....: Yes
Drain hole.....: Yes
Frame material.....: Aluminium
Material approval.....: None
Shaft.....: IEC standard
Key.....: Closed key
Balancing.....: Half key balancing
Vibration class.....: Grade-A
Weight (kg).....: 14,0

Environment condition

Ambient temp. min. (°C).....: -20
Ambient temp. max. (°C).....: 40
Altitude (mtr up to).....: 1000

Bearing

DE Bearing.....: 6205-ZZ/C3
NDE Bearing.....: 6204-ZZ/C3
Fixed bearing.....: DE

Terminal box

Tbox position.....: Top
Cable entry direction.....: Right (from DE)
Cable entry
Main.....: 2 x M25x1,5
Plastic blindcaps
Accessory.....: 1 x M20x1,5
Plastic blindcap
Terminal board thread.....: M5

Test values

Rotor inertia (kgm²).....: 0,0070
Noise level (dB(A)).....: 51
Starting time (sec.).....: 0,04

Motor protection

Thermal protection main.....: PTC 3x 155 dgr
Thermal protection second.....: None
Space heater.....: None None
Temperature detector.....: No
SPM.....: No
IR wire.....: No
Tropical insulation.....: No

Explosion protection

According to.....: None
Type of protection.....: None

General

Direction of rotation.....: CW
Painting.....: RAL 9005
Nameplate.....: Multivoltage
Special packing.....: No
Special requirements.....: No

Rated power (kW)	1,10	1,06	1,32	1,28
Frequency (Hz)	50	50	60	60
Voltage (V)	230 400	220 380	280 480	440
Connection	D Y	D Y	D Y	Y
Full load current (A)	4,15 2,40	4,30 2,46	4,15 2,40	2,46
Speed (rpm)	1440	1440	1730	1730
Power factor cos(phi)	0,76	0,77	0,76	0,78
Efficiency, 100/75/50 (%)	87,2/87,5/85,3	87,2/87,5/85,3	87,2/87,5/85,3	86,3/86,6/84,3
Ist/In	7,60	6,70	7,60	7,00
Full load torque (Nm)	7,25	7,05	7,25	7,05
Tst/Tn	3,80	3,55	3,80	3,30
Tmax/Tn	3,80	3,55	3,80	3,30
Duty	S1	S1	S1	S1
Ambient temp. (°C)	40	45	40	45