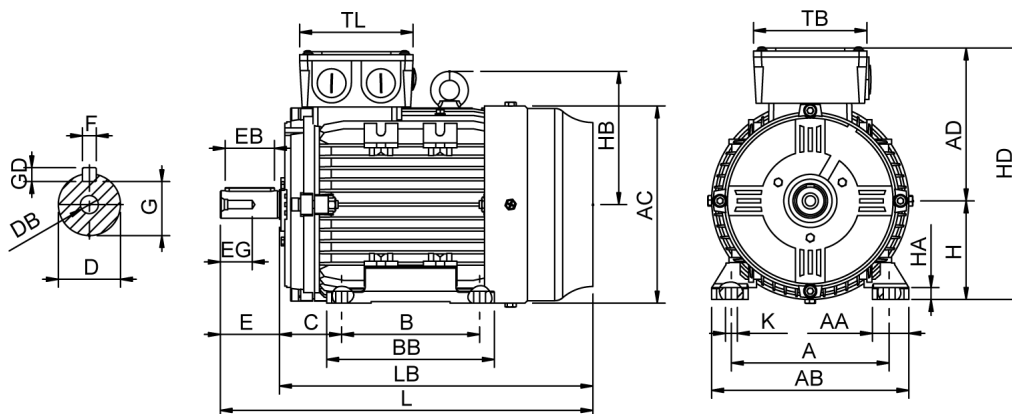


Data Sheet

Itemnumber.....: 6040901100



A = 140	AC = 175	BB = 153	DB = M8	EG = 24	GD = 7	HB = 121	L = 349	TL = 115
AA = 37	AD = 146	C = 56	E = 50	F = 8	H = 90	HD = 236	LB = 299	
AB = 180	B = 125	D = 24	EB = 40	G = 20	HA = 10	K = 10	TB = 115	

Version

Type.....: HMA4 90L-4
Design.....: Induction motor
Standard series.....: IEC 60034
Phase / Voltage range.....: 3~ / Low

Electrical design

Efficiency.....: IE4
Pole.....: 4
Power at 50 Hz (kW).....: 1,50
Hz.....: 50
Voltage.....: 230VD/400VY
Winding voltage.....: 230VD/400VY 50 Hz
Power output (kW).....: 1,50
Duty.....: S1
Insulation class.....: F
Temperature rise.....: B

Mechanical design

Frame size.....: 90
Mounting.....: B3
Rain cap.....: No
Protection class.....: IP55
Cooling method.....: IC411/TEFC
External grounding.....: Yes
Drain hole.....: Yes
Frame material.....: Aluminium
Material approval.....: None
Shaft.....: IEC standard
Key.....: Closed key
Balancing.....: Half key balancing
Vibration class.....: Grade-A
Weight (kg).....: 17,0

Environment condition

Ambient temp. min. (°C).....: -20
Ambient temp. max. (°C).....: 40
Altitude (mtr up to).....: 1000

Bearing

DE Bearing.....: 6205-ZZ/C3
NDE Bearing.....: 6204-ZZ/C3
Fixed bearing.....: DE

Terminal box

Tbox position.....: Top
Cable entry direction.....: Right (from DE)
Cable entry
Main.....: 2 x M25x1,5
Plastic blindcaps
Accessory.....: 1 x M20x1,5
Plastic blindcap
Terminal board thread.....: M5

Test values

Rotor inertia (kgm²).....: 0,0080
Noise level (dB(A)).....: 51
Starting time (sec.).....: 0,04

Motor protection

Thermal protection main.....: PTC 3x 155 dgr
Thermal protection second.....: None
Space heater.....: None None
Temperature detector.....: No
SPM.....: No
IR wire.....: No
Tropical insulation.....: No

Explosion protection

According to.....: None
Type of protection.....: None

General

Direction of rotation.....: CW
Painting.....: RAL 9005
Nameplate.....: Multivoltage
Special packing.....: No
Special requirements.....: No

Rated power (kW)	1,50	1,46	1,80	1,74
Frequency (Hz)	50	50	60	60
Voltage (V)	230 400	220 380	280 480	440
Connection	D Y	D Y	D Y	Y
Full load current (A)	5,60 3,25	5,80 3,35	5,60 3,25	3,35
Speed (rpm)	1440	1440	1730	1730
Power factor cos(phi)	0,76	0,77	0,76	0,78
Efficiency, 100/75/50 (%)	88,2/88,5/86,5	88,2/88,5/86,5	88,2/88,5/86,5	87,4/87,7/85,6
Ist/In	7,70	6,80	7,70	7,10
Full load torque (Nm)	9,90	9,60	9,90	9,60
Tst/Tn	3,00	2,80	3,00	2,60
Tmax/Tn	3,50	3,25	3,50	3,05
Duty	S1	S1	S1	S1
Ambient temp. (°C)	40	45	40	45