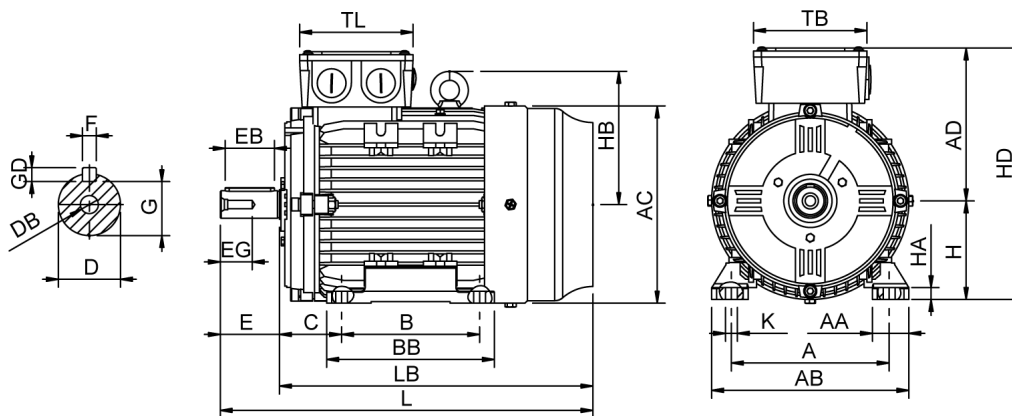


Data Sheet

Itemnumber.....: 6041120100



A = 190	AC = 222	BB = 170	DB = M10	EG = 28	GD = 7	HB = 146	L = 381	TL = 115
AA = 47	AD = 169	C = 70	E = 60	F = 8	H = 112	HD = 281	LB = 321	
AB = 230	B = 140	D = 28	EB = 50	G = 24	HA = 12	K = 12	TB = 115	

Version

Type.....: HMA4 112M-4
Design.....: Induction motor
Standard series.....: IEC 60034
Phase / Voltage range.....: 3~ / Low

Electrical design

Efficiency.....: IE4
Pole.....: 4
Power at 50 Hz (kW).....: 4,00
Hz.....: 50
Voltage.....: 400VD/690VY
Winding voltage.....: 400VD/690VY 50 Hz
Power output (kW).....: 4,00
Duty.....: S1
Insulation class.....: F
Temperature rise.....: B

Mechanical design

Frame size.....: 112
Mounting.....: B3
Rain cap.....: No
Protection class.....: IP55
Cooling method.....: IC411/TEFC
External grounding.....: Yes
Drain hole.....: Yes
Frame material.....: Aluminium
Material approval.....: None
Shaft.....: IEC standard
Key.....: Closed key
Balancing.....: Half key balancing
Vibration class.....: Grade-A
Weight (kg).....: 37,0

Environment condition

Ambient temp. min. (°C).....: -20
Ambient temp. max. (°C).....: 40
Altitude (mtr up to).....: 1000

Bearing

DE Bearing.....: 6306-ZZ/C3
NDE Bearing.....: 6205-ZZ/C3
Fixed bearing.....: DE

Terminal box

Tbox position.....: Top
Cable entry direction.....: Right (from DE)
Cable entry
Main.....: 2 x M25x1,5
Plastic blindcaps
Accessory.....: 1 x M20x1,5
Plastic blindcap
Terminal board thread.....: M5

Test values

Rotor inertia (kgm²).....: 0,019
Noise level (dB(A)).....: 55
Starting time (sec.).....: 0,03

Motor protection

Thermal protection main.....: PTC 3x 155 dgr
Thermal protection second.....: None
Space heater.....: None None
Temperature detector.....: No
SPM.....: No
IR wire.....: No
Tropical insulation.....: No

Explosion protection

According to.....: None
Type of protection.....: None

General

Direction of rotation.....: CW
Painting.....: RAL 9005
Nameplate.....: Multivoltage
Special packing.....: No
Special requirements.....: No

Rated power (kW)	4,00	3,90	4,80	4,65
Frequency (Hz)	50	50	60	60
Voltage (V)	400 690	380 660	480 830	440
Connection	D Y	D Y	D Y	D
Full load current (A)	8,15 4,70	8,35 4,85	8,15 4,70	8,35
Speed (rpm)	1440	1440	1730	1730
Power factor cos(phi)	0,78	0,79	0,78	0,80
Efficiency, 100/75/50 (%)	91,1/90,4/90,0	91,1/90,4/90,0	91,1/90,4/90,0	90,5/89,7/89,3
Ist/In	8,50	7,50	8,50	7,80
Full load torque (Nm)	26,5	25,5	26,5	25,5
Tst/Tn	3,70	3,45	3,70	3,20
Tmax/Tn	3,60	3,35	3,60	3,10
Duty	S1	S1	S1	S1
Ambient temp. (°C)	40	45	40	45