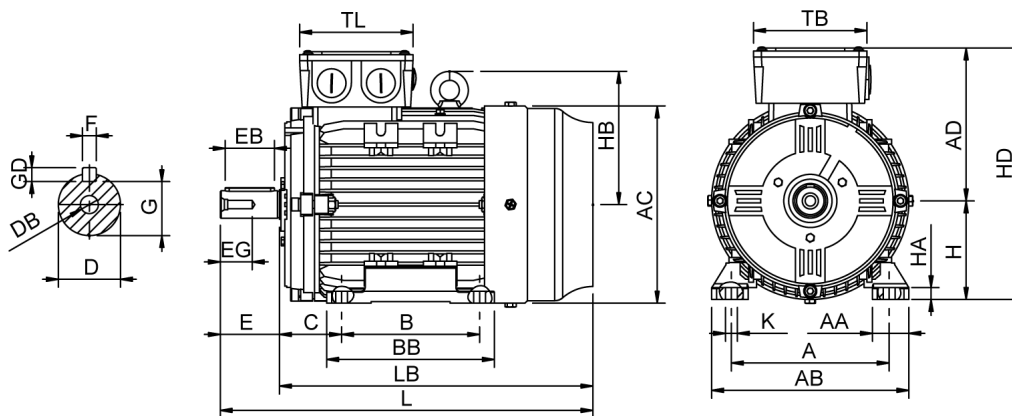


Data Sheet

Itemnumber.....: 6041321100



A = 216	AC = 260	BB = 210	DB = M12	EG = 30	GD = 8	HB = 180	L = 513	TL = 138
AA = 54	AD = 192	C = 89	E = 80	F = 10	H = 132	HD = 324	LB = 433	
AB = 264	B = 178	D = 38	EB = 70	G = 33	HA = 15	K = 12	TB = 138	

Version

Type.....: HMA4 132M-4
Design.....: Induction motor
Standard series.....: IEC 60034
Phase / Voltage range.....: 3~ / Low

Electrical design

Efficiency.....: IE4
Pole.....: 4
Power at 50 Hz (kW).....: 7,50
Hz.....: 50
Voltage.....: 400VD/690VY
Winding voltage.....: 400VD/690VY 50 Hz
Power output (kW).....: 7,50
Duty.....: S1
Insulation class.....: F
Temperature rise.....: B

Mechanical design

Frame size.....: 132
Mounting.....: B3
Rain cap.....: No
Protection class.....: IP55
Cooling method.....: IC411/TEFC
External grounding.....: Yes
Drain hole.....: Yes
Frame material.....: Aluminium
Material approval.....: None
Shaft.....: IEC standard
Key.....: Closed key
Balancing.....: Half key balancing
Vibration class.....: Grade-A
Weight (kg).....: 63,0

Environment condition

Ambient temp. min. (°C).....: -20
Ambient temp. max. (°C).....: 40
Altitude (mtr up to).....: 1000

Bearing

DE Bearing.....: 6208-ZZ/C3
NDE Bearing.....: 6206-ZZ/C3
Fixed bearing.....: DE

Terminal box

Tbox position.....: Top
Cable entry direction.....: Right (from DE)
Cable entry
Main.....: 2 x M32x1,5
Plastic blindcaps
Accessory.....: 1 x M20x1,5
Plastic blindcap
Terminal board thread.....: M5

Test values

Rotor inertia (kgm²).....: 0,051
Noise level (dB(A)).....: 57
Starting time (sec.).....: 0,05

Motor protection

Thermal protection main.....: PTC 3x 155 dgr
Thermal protection second.....: None
Space heater.....: None None
Temperature detector.....: No
SPM.....: No
IR wire.....: No
Tropical insulation.....: No

Explosion protection

According to.....: None
Type of protection.....: None

General

Direction of rotation.....: CW
Painting.....: RAL 9005
Nameplate.....: Multivoltage
Special packing.....: No
Special requirements.....: No

Rated power (kW)	7,50	7,30	9,00	8,75
Frequency (Hz)	50	50	60	60
Voltage (V)	400 690	380 660	480 830	440
Connection	D Y	D Y	D Y	D
Full load current (A)	14,8 8,60	15,2 8,85	14,8 8,60	15,2
Speed (rpm)	1460	1460	1760	1760
Power factor cos(phi)	0,79	0,80	0,79	0,81
Efficiency, 100/75/50 (%)	92,6/92,0/91,0	92,6/92,0/91,0	92,6/92,0/91,0	92,1/91,4/90,4
Ist/In	10,6	9,25	10,6	9,65
Full load torque (Nm)	49,0	47,5	49,0	47,5
Tst/Tn	3,60	3,35	3,60	3,10
Tmax/Tn	4,00	3,70	4,00	3,45
Duty	S1	S1	S1	S1
Ambient temp. (°C)	40	45	40	45