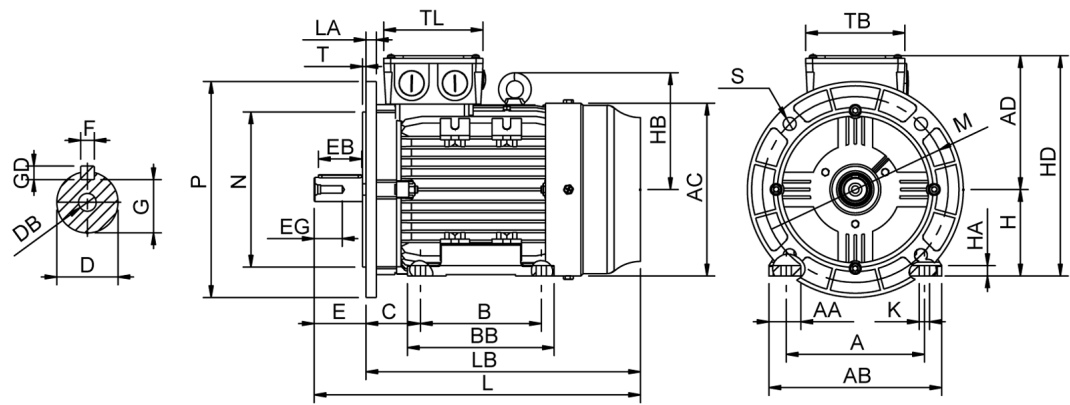


Data Sheet

Itemnumber..... 6041321400



A = 216	AC = 260	BB = 210	DB = M12	EG = 30	GD = 8	HB = 180	L = 513	M = 265	S = 4-Ø14.5	TL = 138
AA = 54	AD = 192	C = 89	E = 80	F = 10	H = 132	HD = 324	LA = 14	N = 230	T = 4	
AB = 264	B = 178	D = 38	EB = 70	G = 33	HA = 15	K = 12	LB = 433	P = 300	TB = 138	

Version Type..... HMA4 132M-4 Design..... Induction motor Standard series..... IEC 60034 Phase / Voltage range..... 3~ / Low	Mechanical design Frame size..... 132 Mounting..... B35 Rain cap..... No Protection class..... IP55 Cooling method..... IC411/TEFC External grounding..... Yes Drain hole..... Yes Frame material..... Aluminium Material approval..... None Shaft..... IEC standard Key..... Closed key Balancing..... Half key balancing Vibration class..... Grade-A Weight (kg)..... 63,0	Bearing DE Bearing..... 6208-ZZ/C3 NDE Bearing..... 6206-ZZ/C3 Fixed bearing..... DE
Electrical design Efficiency..... IE4 Pole..... 4 Power at 50 Hz (kW)..... 7,50 Hz..... 50 Voltage..... 400VD/690VY Winding voltage..... 400VD/690VY 50 Hz Power output (kW)..... 7,50 Duty..... S1 Insulation class..... F Temperature rise..... B	Environment condition Ambient temp. min. (°C)..... -20 Ambient temp. max. (°C)..... 40 Altitude (mtr up to)..... 1000	Terminal box Tbox position..... Top Cable entry direction..... Right (from DE) Cable entry Main..... 2 x M32x1,5 Plastic blindcaps Accessory..... 1 x M20x1,5 Plastic blindcap Terminal board thread..... M5
Motor protection Thermal protection main..... PTC 3x 155 dgr Thermal protection second.. None Space heater..... None None Temperature detector..... No SPM..... No IR wire..... No Tropical insulation..... No		Test values Rotor inertia (kgm²)..... 0,051 Noise level (dB(A))..... 57 Starting time (sec.)..... 0,05
Explosion protection According to..... None Type of protection..... None		

General
Direction of rotation..... CW
Painting..... RAL 9005
Nameplate..... Multivoltage
Special packing..... No
Special requirements..... No

Rated power (kW)	7,50	7,30	9,00	8,75
Frequency (Hz)	50	50	60	60
Voltage (V)	400 690	380 660	480 830	440
Connection	D Y	D Y	D Y	D
Full load current (A)	14,8 8,60	15,2 8,85	14,8 8,60	15,2
Speed (rpm)	1460	1460	1760	1760
Power factor cos(phi)	0,79	0,80	0,79	0,81
Efficiency, 100/75/50 (%)	92,6/92,0/91,0	92,6/92,0/91,0	92,6/92,0/91,0	92,1/91,4/90,4
Ist/In	10,6	9,25	10,6	9,65
Full load torque (Nm)	49,0	47,5	49,0	47,5
Tst/Tn	3,60	3,35	3,60	3,10
Tmax/Tn	4,00	3,70	4,00	3,45
Duty	S1	S1	S1	S1
Ambient temp. (°C)	40	45	40	45