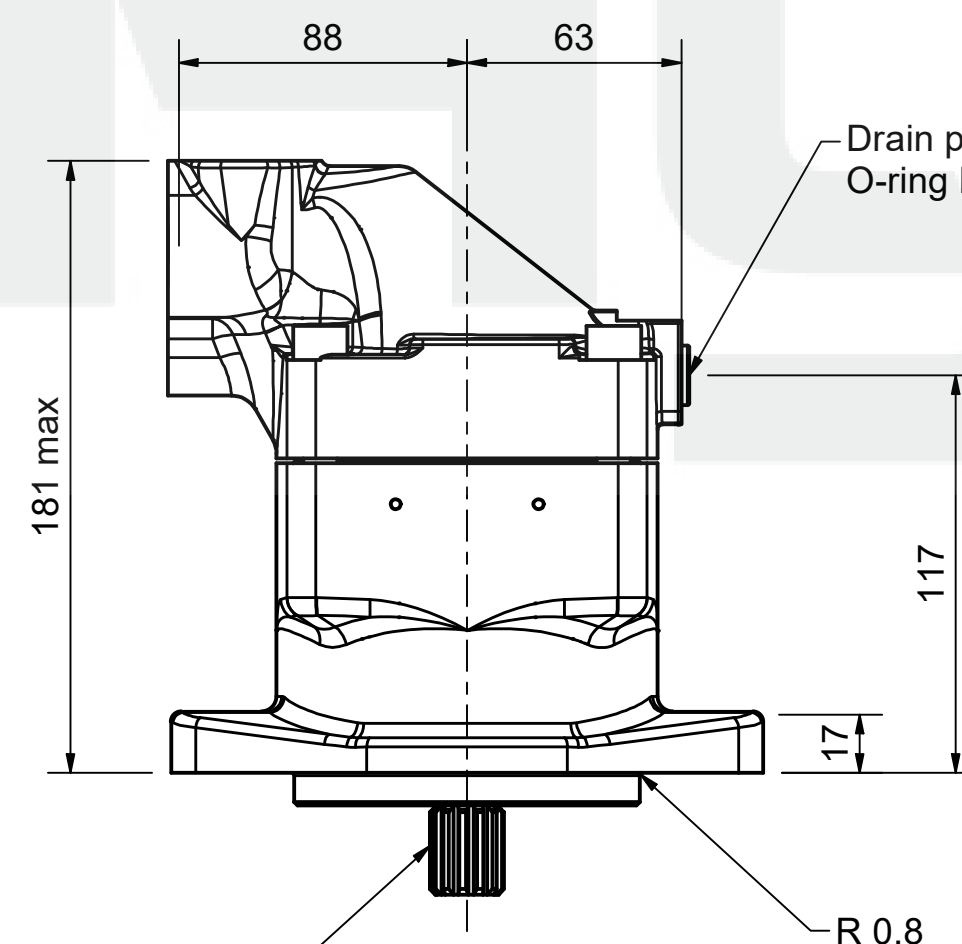
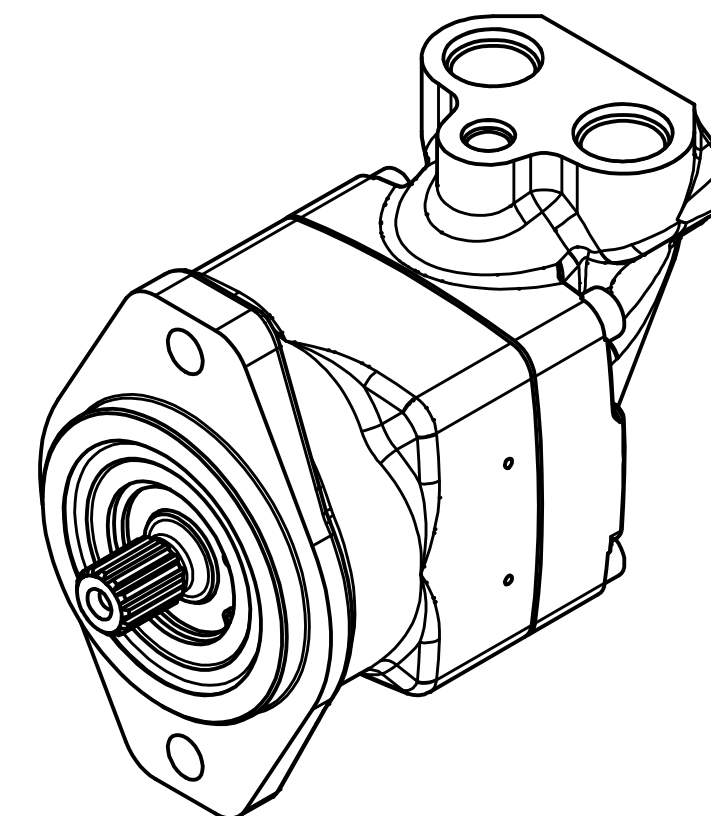
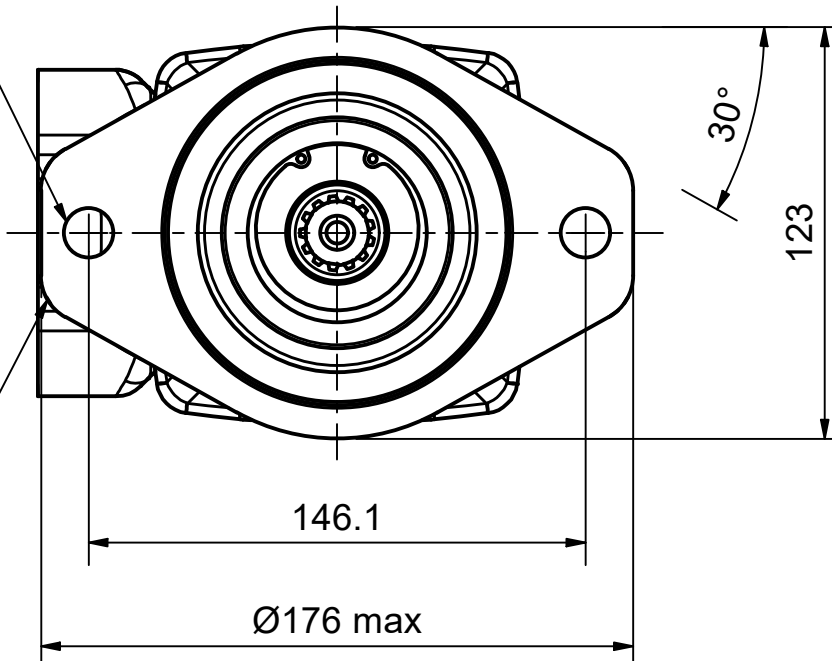


Ø14.4 (x2)

14 R



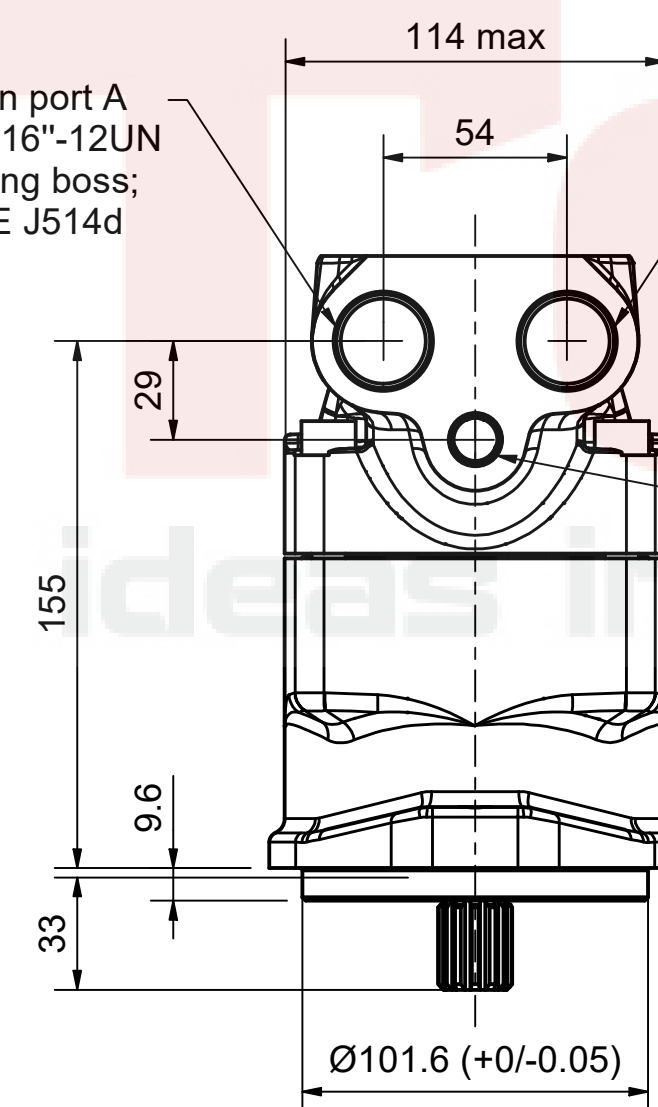
Type S spline shaft  
SAE B,13T,16/32 DP

Drain port D 9/16"-18 UNF  
O-ring boss; SAE J514d

Main port A  
1 1/16"-12UN  
O-ring boss;  
SAE J514d

Main port B  
1 1/16"-12UN  
O-ring boss;  
SAE J514d

Drain port C 9/16"-18UNF  
O-ring boss; SAE J514d



**Disclaimer:**  
Parker PMDE has a continuous policy of product development and although the Company reserves the right to change specifications, it attempts to keep customers informed of any alterations. This publication is for general information only and customers are requested to contact their local Parker dealer for detailed information and advice on a products suitability for specific applications. All products are sold subject to the company's standard conditions of sale.

F11-019-RU-SV-S-000-0000-00

F11-019



Pump & Motor Division Europe

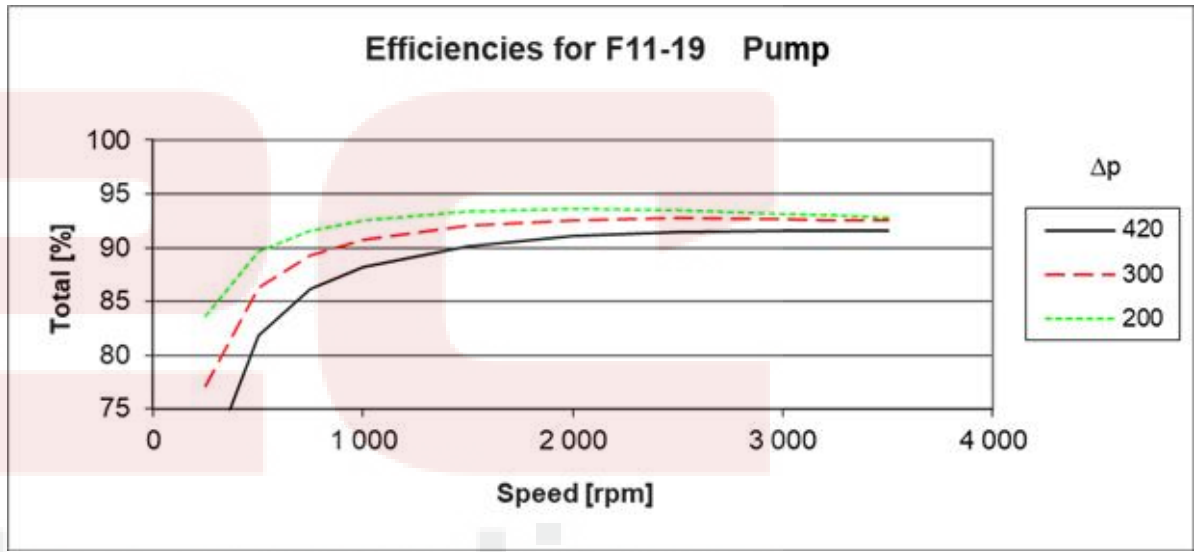
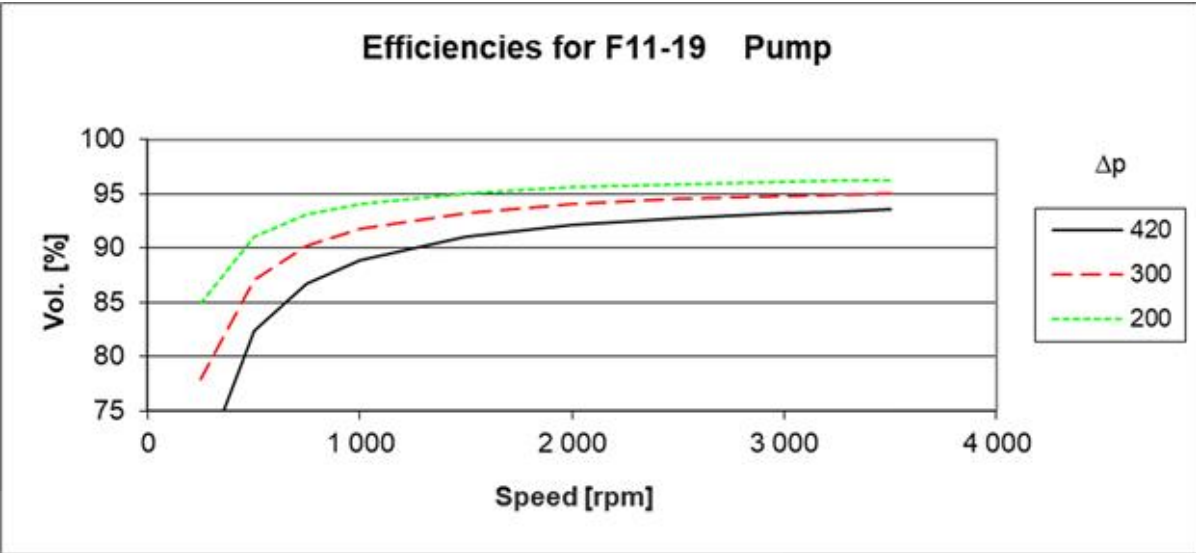
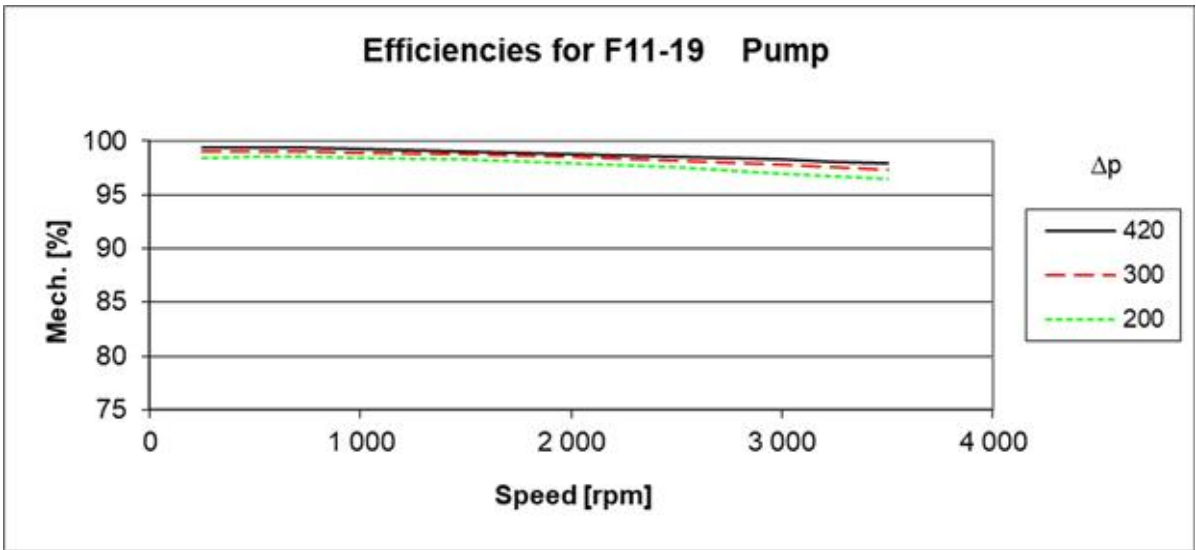


F11 Pump



F12 Pump

|              |              |              |
|--------------|--------------|--------------|
| F11-19       | Pump         |              |
| Displacement | 19 cc/rev    |              |
| Max speed    | 3500 rpm     | Intermittent |
| Max speed    | 3500 rpm     | Continuously |
| Max pressure | 420 bar      | Intermittent |
| Max pressure | 350 bar      | Continuously |
| Max Torque   | 129.4 Nm     |              |
| Torque       | 0.302 Nm/bar |              |
| Max Flow     | 65.2 Lpm     |              |
| Max Power    | 50.9 kW      |              |



| Rpm | 250   |       |     | 500   |       |     | 750   |       |      | 1000  |       |      | 1500  |       |      | 2000  |       |      | 2500  |       |      | 3000  |       |      | 3250  |       |      | 3500  |       |      |
|-----|-------|-------|-----|-------|-------|-----|-------|-------|------|-------|-------|------|-------|-------|------|-------|-------|------|-------|-------|------|-------|-------|------|-------|-------|------|-------|-------|------|
| Bar | l/min | Nm    | kW  | l/min | Nm    | kW  | l/min | Nm    | kW   | l/min | Nm    | kW   | l/min | Nm    | kW   | l/min | Nm    | kW   | l/min | Nm    | kW   | l/min | Nm    | kW   | l/min | Nm    | kW   | l/min | Nm    | kW   |
| 50  | 4.5   | 16.2  | 0.4 | 9.2   | 16.1  | 0.9 | 13.9  | 16.0  | 1.3  | 18.5  | 16.0  | 1.7  | 27.9  | 16.1  | 2.6  | 37.2  | 16.2  | 3.5  | 46.5  | 16.4  | 4.4  | 55.9  | 16.7  | 5.4  | 60.5  | 16.8  | 5.9  | 65.2  | 17.0  | 6.4  |
| 100 | 4.4   | 31.2  | 0.9 | 9.0   | 31.1  | 1.7 | 13.7  | 31.1  | 2.6  | 18.3  | 31.1  | 3.4  | 27.6  | 31.2  | 5.1  | 36.9  | 31.3  | 6.8  | 46.2  | 31.6  | 8.5  | 55.5  | 31.8  | 10.3 | 60.2  | 32.0  | 11.2 | 64.8  | 32.2  | 12.1 |
| 150 | 4.2   | 46.2  | 1.4 | 8.8   | 46.2  | 2.6 | 13.5  | 46.2  | 3.9  | 18.1  | 46.2  | 5.1  | 27.4  | 46.3  | 7.6  | 36.6  | 46.5  | 10.1 | 45.9  | 46.7  | 12.7 | 55.1  | 47.0  | 15.3 | 59.8  | 47.2  | 16.6 | 64.4  | 47.4  | 18.0 |
| 200 | 4.0   | 61.3  | 1.9 | 8.6   | 61.2  | 3.5 | 13.3  | 61.3  | 5.2  | 17.9  | 61.3  | 6.8  | 27.1  | 61.4  | 10.2 | 36.3  | 61.6  | 13.5 | 45.5  | 61.9  | 16.9 | 54.8  | 62.2  | 20.4 | 59.4  | 62.4  | 22.1 | 64.0  | 62.6  | 23.9 |
| 250 | 3.9   | 76.3  | 2.5 | 8.5   | 76.3  | 4.5 | 13.1  | 76.3  | 6.6  | 17.6  | 76.4  | 8.6  | 26.8  | 76.5  | 12.8 | 36.0  | 76.7  | 17.0 | 45.2  | 77.0  | 21.2 | 54.4  | 77.4  | 25.5 | 59.0  | 77.6  | 27.7 | 63.6  | 77.8  | 29.9 |
| 300 | 3.7   | 91.3  | 3.1 | 8.3   | 91.4  | 5.5 | 12.9  | 91.4  | 8.0  | 17.4  | 91.4  | 10.5 | 26.6  | 91.6  | 15.5 | 35.7  | 91.9  | 20.5 | 44.9  | 92.2  | 25.6 | 54.0  | 92.5  | 30.8 | 58.6  | 92.7  | 33.3 | 63.2  | 92.9  | 36.0 |
| 350 | 3.5   | 106.4 | 3.8 | 8.1   | 106.4 | 6.6 | 12.6  | 106.5 | 9.4  | 17.2  | 106.5 | 12.4 | 26.3  | 106.7 | 18.2 | 35.4  | 107.0 | 24.1 | 44.5  | 107.3 | 30.0 | 53.7  | 107.7 | 36.0 | 58.2  | 107.9 | 39.1 | 62.8  | 108.1 | 42.1 |
| 420 | 3.3   | 127.4 | 4.8 | 7.8   | 127.5 | 8.1 | 12.4  | 127.6 | 11.6 | 16.9  | 127.6 | 15.1 | 25.9  | 127.9 | 22.1 | 35.0  | 128.2 | 29.2 | 44.1  | 128.6 | 36.4 | 53.1  | 129.0 | 43.6 | 57.7  | 129.2 | 47.2 | 62.2  | 129.4 | 50.9 |

**Disclaimer:**  
Parker PMDE has a continuous policy of product development and although the Company reserves the right to change specifications, it attempts to keep customers informed of any alterations. This publication is for general information only and customers are requested to contact their local Parker dealer for detailed information and advice on a products suitability for specific applications. All products are sold subject to the company's standard conditions of sale.

F11-019-RU-SV-S-000-0000-00

F11-019



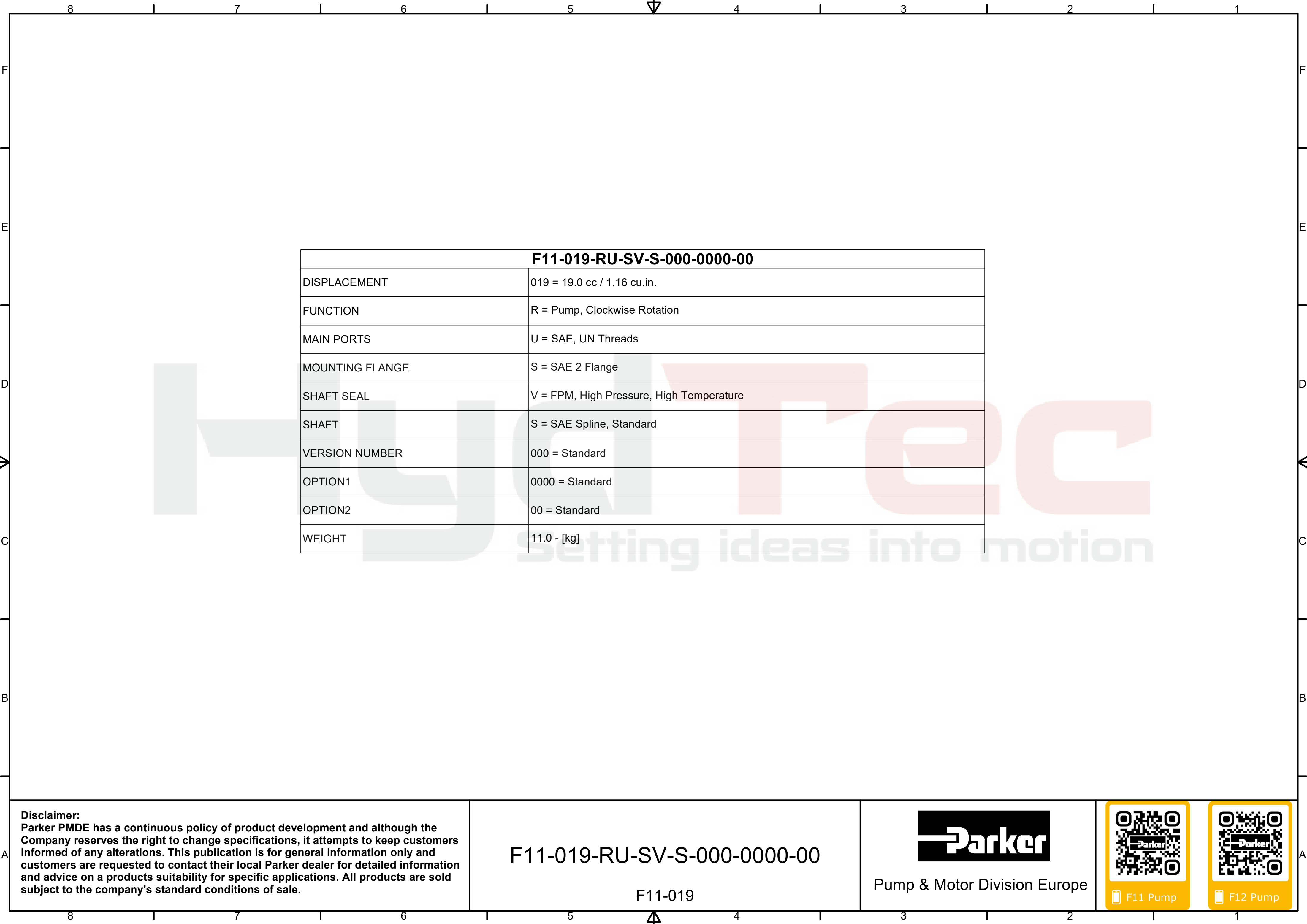
Pump & Motor Division Europe



F11 Pump



F12 Pump



| F11-019-RU-SV-S-000-0000-00 |  |
|-----------------------------|--|
| DISPLACEMENT                | 019 = 19.0 cc / 1.16 cu.in.              |
| FUNCTION                    | R = Pump, Clockwise Rotation             |
| MAIN PORTS                  | U = SAE, UN Threads                      |
| MOUNTING FLANGE             | S = SAE 2 Flange                         |
| SHAFT SEAL                  | V = FPM, High Pressure, High Temperature |
| SHAFT                       | S = SAE Spline, Standard                 |
| VERSION NUMBER              | 000 = Standard                           |
| OPTION1                     | 0000 = Standard                          |
| OPTION2                     | 00 = Standard                            |
| WEIGHT                      | 11.0 - [kg]                              |

**Disclaimer:**  
Parker PMDE has a continuous policy of product development and although the Company reserves the right to change specifications, it attempts to keep customers informed of any alterations. This publication is for general information only and customers are requested to contact their local Parker dealer for detailed information and advice on a products suitability for specific applications. All products are sold subject to the company's standard conditions of sale.

F11-019-RU-SV-S-000-0000-00

F11-019



Pump & Motor Division Europe



F11 Pump



F12 Pump