



Visit our homepage  
for additional support  
[parker.com/pmde](http://parker.com/pmde)

Bulletin MSG30-5511-M1/UK

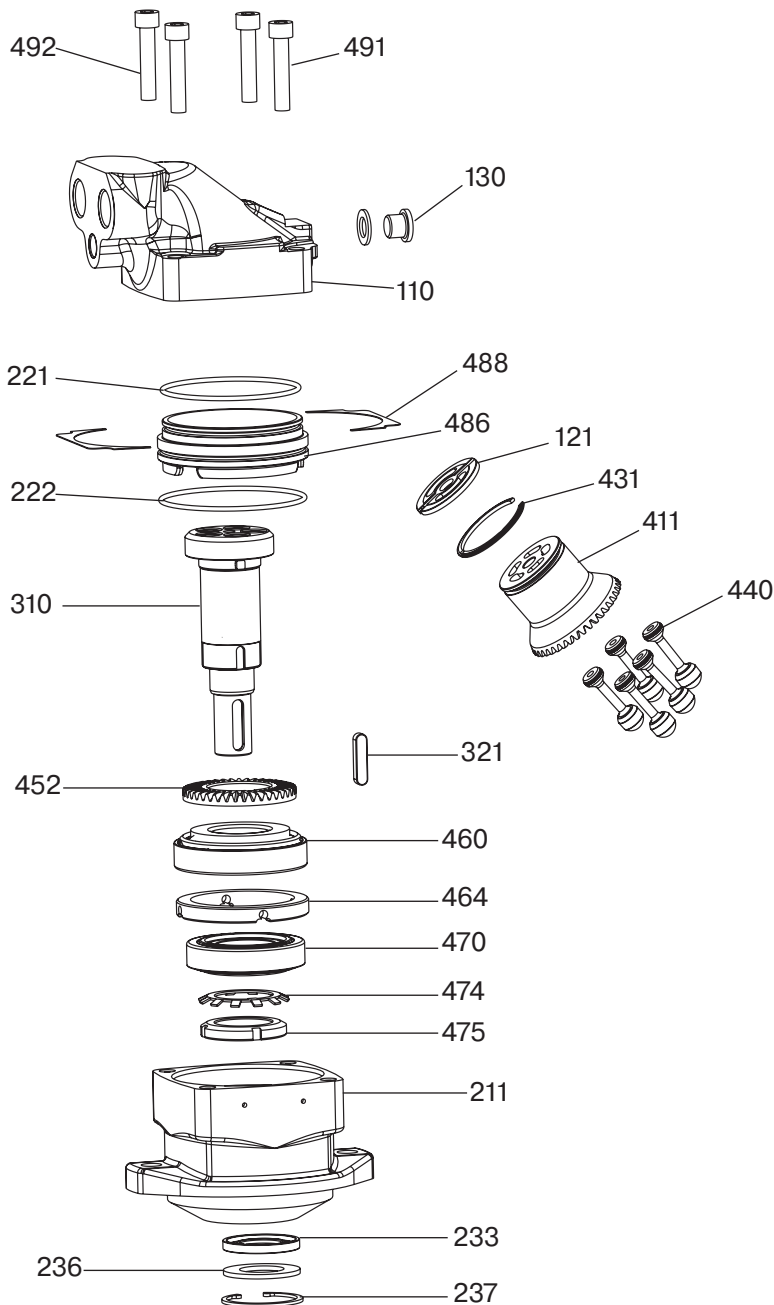
## Spare Parts Series F11

---

Effective: May 01, 2021  
Supersedes: September, 2020



ENGINEERING YOUR SUCCESS.



| Pos                   | Part No | Description                | Qty | Remarks          |
|-----------------------|---------|----------------------------|-----|------------------|
| <b>Housing parts</b>  |         |                            |     |                  |
| 110                   | 3703007 | Barrel Housing Assy Type B | 1   | Require item 130 |
| 110                   | 3704304 | Barrel Housing Assy Type U | 1   | Require item 130 |
| 130                   |         | Hex Socket Plug Assy BSP   | 1   | VSTI1/4EDVITCF   |
| 130                   |         | Hex Socket Plug Assy UN    | 1   | 6 HP5ON-S        |
| 211                   | 3700520 | Bearing Housing Type C     | 1   |                  |
| 486                   | 3797258 | Guide Spacer               | 1   |                  |
| <b>Rotating parts</b> |         |                            |     |                  |
| 310                   | 3796077 | Shaft Assy type K          | 1   | Require item 321 |
| 321                   | 3796440 | Flat Key type K            | 1   |                  |
| 452                   | 3795831 | Ring Gear                  | 1   |                  |

**For other parts please contact Parker Hannifin**

**Seal kits**

|         |                        |
|---------|------------------------|
| 3797118 | Sealing kit type V FPM |
| 3797109 | Sealing kit type N NBR |

**Repair Spare part Kit**

|         |                              |
|---------|------------------------------|
| 3721300 | Type M (Motor)               |
| 3723953 | Type H (High pressure Motor) |
| 3723954 | Type L (CCW pump)            |
| 3723955 | Type R (CW pump)             |

**Bearing spare part kit**

|         |             |
|---------|-------------|
| 3723967 | Bearing kit |
|---------|-------------|

**Shim kit**

|         |                  |
|---------|------------------|
| 3721345 | Shims kit 0,8 mm |
|---------|------------------|

**Seal kit contain:**

O-rings pos: 221, 222  
 Shaft seal pos: 233  
 Back-up Ring pos: 236  
 Retaining rings pos: 237

**Repair spare part kit contain:**

Valve plate pos: 121  
 Cylinder Barrel pos: 411  
 Barrel Retaining Ring pos: 431  
 Pistons pos: 440 (5 pcs)  
 Hex Screws pos: 491, 492 (4 pcs)

**Bearing spare part kit contain:**

Tap Rol Bearing pos: 460, 470  
 Lock washer pos: 474  
 Round nut pos: 475

**Shim kit contain:**

Shims pos: 488 (1 pcs on each side)

| Pos                   | Part No | Description                | Qty | Remarks          |
|-----------------------|---------|----------------------------|-----|------------------|
| <b>Housing parts</b>  |         |                            |     |                  |
| 110                   | 3795133 | Barrel Housing Assy Type B | 1   | Require item 130 |
| 130                   |         | Hex Socket Plug Assy BSP   | 1   | VSTI3/8EDVITCF   |
| 211                   | 3700905 | Bearing Housing Type C     | 1   |                  |
| 486                   | 3783044 | Guide Spacer               | 1   |                  |
| <b>Rotating parts</b> |         |                            |     |                  |
| 310                   | 3796083 | Shaft Assy type D          | 1   |                  |
| 310                   | 3796080 | Shaft Assy type K          | 1   | Require item 321 |
| 310                   | 3785221 | Shaft Assy type S          | 1   |                  |
| 321                   | 3796439 | Flat Key type K            | 1   |                  |
| 452                   | 3795832 | Ring Gear                  | 1   |                  |

**For other parts please contact Parker Hannifin**

**Seal kits**

3783269 Sealing kit type V FPM

**Repair Spare part Kit**

3723956 Type M (Motor)

**Bearing spare part kit**

3723968 Bearing kit

**Shim kit**

3721346 Shims kit 0,8 mm

**Seal kit contain:**

O-rings pos: 221, 222  
 Shaft seal pos: 233  
 Back-up Ring pos: 236  
 Retaining rings pos: 237

**Repair spare part kit contain:**

Valve plate pos: 121  
 Cylinder Barrel pos: 411  
 Barrel Retaining Ring pos: 431  
 Pistons pos: 440 (5 pcs)  
 Hex Screws pos: 491, 492 (4 pcs)

**Bearing spare part kit contain:**

Tap Rol Bearing pos: 460, 470  
 Lock washer pos: 474  
 Round nut pos: 475

**Shim kit contain:**

Shims pos: 488 (1 pcs on each side)

| Pos                   | Part No | Description                | Qty | Remarks          |
|-----------------------|---------|----------------------------|-----|------------------|
| <b>Housing parts</b>  |         |                            |     |                  |
| 110                   | 3703010 | Barrel Housing Assy Type B | 1   | Require item 130 |
| 110                   | 3704105 | Barrel Housing Assy Type U | 1   | Require item 130 |
| 130                   |         | Hex Socket Plug Assy BSP   | 1   | VSTI3/8EDVITCF   |
| 130                   |         | Hex Socket Plug Assy UN    | 1   | 6 HP5ON-S        |
| 211                   | 3700905 | Bearing Housing Type C     | 1   |                  |
| 211                   | 3783242 | Bearing Housing Type S     | 1   |                  |
| 211                   | 3784906 | Bearing Housing Type X     | 1   | Saw motor flange |
| 486                   | 3783044 | Guide Spacer               | 1   |                  |
| <b>Rotating parts</b> |         |                            |     |                  |
| 310                   | 3796083 | Shaft Assy type D          | 1   |                  |
| 310                   | 3796080 | Shaft Assy type K          | 1   | Require item 321 |
| 310                   | 3785221 | Shaft Assy type S          | 1   |                  |
| 321                   | 3796439 | Flat Key type K            | 1   |                  |
| 452                   | 3795832 | Ring Gear                  | 1   |                  |

**For other parts please contact Parker Hannifin**

**Seal kits**

|         |                         |
|---------|-------------------------|
| 3783269 | Sealing kit type V FPM  |
| 3797111 | Sealing kit type N NBR  |
| 3783383 | Sealing kit type S PTFE |

**Repair Spare part Kit**

|         |                              |
|---------|------------------------------|
| 3721304 | Type M (Motor)               |
| 3721305 | Type S (High speed Motor)    |
| 3723957 | Type H (High pressure Motor) |
| 3723958 | Type L (CCW pump)            |
| 3723959 | Type R (CW pump)             |

**Bearing spare part kit**

|         |             |
|---------|-------------|
| 3723968 | Bearing kit |
|---------|-------------|

**Shim kit**

|         |                  |
|---------|------------------|
| 3721346 | Shims kit 0,8 mm |
|---------|------------------|

**Seal kit contain:**

O-rings pos: 221, 222  
 Shaft seal pos: 233  
 Back-up Ring pos: 236  
 Retaining rings pos: 237

**Repair spare part kit contain:**

Valve plate pos: 121  
 Cylinder Barrel pos: 411  
 Barrel Retaining Ring pos: 431  
 Pistons pos: 440 (5 pcs)  
 Hex Screws pos: 491, 492 (4 pcs)

**Bearing spare part kit contain:**

Tap Rol Bearing pos: 460, 470  
 Lock washer pos: 474  
 Round nut pos: 475

**Shim kit contain:**

Shims pos: 488 (1 pcs on each side)

| Pos                   | Part No | Description                | Qty | Remarks          |
|-----------------------|---------|----------------------------|-----|------------------|
| <b>Housing parts</b>  |         |                            |     |                  |
| 110                   | 3783214 | Barrel Housing Assy Type B | 1   | Require item 130 |
| 130                   |         | Hex Socket Plug Assy BSP   | 1   | VSTI3/8EDVITCF   |
| 211                   | 3700905 | Bearing Housing Type C     | 1   |                  |
| 211                   | 3783242 | Bearing Housing Type S     | 1   |                  |
| 486                   | 3783044 | Guide Spacer               | 1   |                  |
| <b>Rotating parts</b> |         |                            |     |                  |
| 310                   | 3796083 | Shaft Assy type D          | 1   |                  |
| 310                   | 3796080 | Shaft Assy type K          | 1   | Require item 321 |
| 310                   | 3785221 | Shaft Assy type S          | 1   |                  |
| 321                   | 3796439 | Flat Key type K            | 1   |                  |
| 452                   | 3795832 | Ring Gear                  | 1   |                  |

**For other parts please contact Parker Hannifin**

**Seal kits**

|         |                         |
|---------|-------------------------|
| 3783269 | Sealing kit type V FPM  |
| 3797111 | Sealing kit type N NBR  |
| 3783383 | Sealing kit type S PTFE |

**Repair Spare part Kit**

|         |                           |
|---------|---------------------------|
| 3723960 | Type Q (Low noise motor)  |
| 3721358 | Type S (High speed Motor) |
| 3723962 | Type L (CCW pump)         |
| 3723963 | Type R (CW pump)          |

**Bearing spare part kit**

|         |             |
|---------|-------------|
| 3723968 | Bearing kit |
|---------|-------------|

**Shim kit**

|         |                  |
|---------|------------------|
| 3721346 | Shims kit 0,8 mm |
|---------|------------------|

**Seal kit contain:**

O-rings pos: 221, 222  
 Shaft seal pos: 233  
 Back-up Ring pos: 236  
 Retaining rings pos: 237

**Repair spare part kit contain:**

Valve plate pos: 121  
 Cylinder Barrel pos: 411  
 Barrel Retaining Ring pos: 431  
 Pistons pos: 440 (5 pcs)  
 Hex Screws pos: 491, 492 (4 pcs)

**Bearing spare part kit contain:**

Tap Rol Bearing pos: 460, 470  
 Lock washer pos: 474  
 Round nut pos: 475

**Shim kit contain:**

Shims pos: 488 (1 pcs on each side)

| Pos                   | Part No | Description                | Qty | Remarks             |
|-----------------------|---------|----------------------------|-----|---------------------|
| <b>Housing parts</b>  |         |                            |     |                     |
| 110                   | 3783214 | Barrel Housing Assy Type B | 1   | Require item 130    |
| 130                   |         | Hex Socket Plug Assy BSP   | 1   | VSTI3/8EDVITCF      |
| 211                   | 3783240 | Bearing Housing Type C     | 1   |                     |
| 211                   | 3783223 | Bearing Housing Type S     | 1   |                     |
| 211                   | 3784908 | Bearing Housing Type W     | 1   | Saw motor flange    |
| 486                   | 3783044 | Guide Spacer               | 1   |                     |
| <b>Rotating parts</b> |         |                            |     |                     |
| 310                   | 3782825 | Shaft Assy type K          | 1   | Require item 321    |
| 310                   | 3783281 | Shaft Assy type S          | 1   |                     |
| 310                   | 3783282 | Shaft Assy type T          | 1   | Require item 321    |
| 310                   | 3783382 | Shaft Assy type X          | 1   | For housing 3784908 |
| 321                   | 909305  | Flat Key type K            | 1   |                     |
| 321                   | 118225  | Flat Key type T            | 1   |                     |
| 321                   | 909306  | Flat Key type X            | 1   | For shaft 3783382   |
| 452                   | 3795832 | Ring Gear                  | 1   |                     |

**For other parts please contact  
Parker Hannifin**

**Seal kits**

|         |                         |
|---------|-------------------------|
| 3785038 | Sealing kit type V FPM  |
| 3721538 | Sealing kit type S PTFE |

**Repair Spare part Kit**

|         |                           |
|---------|---------------------------|
| 3723960 | Type Q (Low noise motor)  |
| 3721358 | Type S (High speed Motor) |
| 3723962 | Type L (CCW pump)         |
| 3723963 | Type R (CW pump)          |

**Bearing spare part kit**

|         |             |
|---------|-------------|
| 3723968 | Bearing kit |
|---------|-------------|

**Shim kit**

|         |                  |
|---------|------------------|
| 3721346 | Shims kit 0,8 mm |
|---------|------------------|

**Seal kit contain:**

O-rings pos: 221, 222  
Shaft seal pos: 233  
Back-up Ring pos: 236  
Retaining rings pos: 237

**Repair spare part kit contain:**

Valve plate pos: 121  
Cylinder Barrel pos: 411  
Barrel Retaining Ring pos: 431  
Pistons pos: 440 (5 pcs)  
Hex Screws pos: 491, 492 (4 pcs)

**Bearing spare part kit contain:**

Tap Rol Bearing pos: 460, 470  
Lock washer pos: 474  
Round nut pos: 475

**Shim kit contain:**

Shims pos: 488 (1 pcs on each side)

| Pos                   | Part No | Description                | Qty | Remarks               |
|-----------------------|---------|----------------------------|-----|-----------------------|
| <b>Housing parts</b>  |         |                            |     |                       |
| 110                   | 3704782 | Barrel Housing Assy Type B | 1   | Require item 130      |
| 110                   | 3703438 | Barrel Housing Assy Type U | 1   | Require item 130      |
| 130                   |         | Hex Socket Plug Assy BSP   | 1   | VSTI3/8EDVITCF        |
| 130                   |         | Hex Socket Plug Assy UN    | 1   | 6 HP5ON-S             |
| 211                   | 3788269 | Bearing Housing Type C     | 1   |                       |
| 211                   | 3700237 | Bearing Housing Type S     | 1   |                       |
| 211                   | 3784910 | Bearing Housing Type X     | 1   | Saw motor flange      |
| 486                   | 3785236 | Guide Spacer               | 1   |                       |
| <b>Rotating parts</b> |         |                            |     |                       |
| 310                   | 3796087 | Shaft Assy type K          | 1   | Require item item 321 |
| 310                   | 3796092 | Shaft Assy type S          | 1   |                       |
| 310                   | 3796089 | Shaft Assy type T          | 1   | Require item item 321 |
| 310                   | 3797255 | Shaft Assy type X          | 1   | For housing 3784910   |
| 321                   | 909305  | Flat Key type K            | 1   |                       |
| 321                   | 118225  | Flat Key type T            | 1   |                       |
| 321                   | 909306  | Flat Key type X            | 1   | For shaft 3797255     |
| 452                   | 3795833 | Ring Gear                  | 1   |                       |

**For other parts please contact  
Parker Hannifin**

**Seal kits**

|         |                         |
|---------|-------------------------|
| 3783270 | Sealing kit type V FPM  |
| 3783384 | Sealing kit type S PTFE |
| 3797112 | Sealing kit type N NBR  |

**Repair Spare part Kit**

|         |                              |
|---------|------------------------------|
| 3721306 | Type M (Motor)               |
| 3721267 | Type S (High speed Motor)    |
| 3723964 | Type H (High pressure Motor) |
| 3723965 | Type L (CCW pump)            |
| 3723966 | Type R (CW pump)             |

**Bearing spare part kit**

|         |                             |
|---------|-----------------------------|
| 3723969 | Bearing kit standard        |
| 3723970 | Bearing kit housing 3784910 |

**Shim kit**

|         |                  |
|---------|------------------|
| 3721347 | Shims kit 0,8 mm |
|---------|------------------|

**Seal kit contain:**

O-rings pos: 221, 222  
Shaft seal pos: 233  
Back-up Ring pos: 236  
Retaining rings pos: 237

**Repair spare part kit contain:**

Valve plate pos: 121  
Cylinder Barrel pos: 411  
Barrel Retaining Ring pos: 431  
Pistons pos: 440 (5 pcs)  
Hex Screws pos: 491, 492 (4 pcs)

**Bearing spare part kit contain:**

Tap Rol Bearing pos: 460, 470  
Lock washer pos: 474  
Round nut pos: 475

**Shim kit contain:**

Shims pos: 488 (1 pcs on each side)









## Declaration

### Position notification regarding Machinery Directive 2006/42/EC:

Products made by the Pump & Motor Division Europe (PMDE) of Parker Hannifin are excluded from the scope of the machinery directive following the "Cetop" Position Paper on the implementation of the Machinery Directive 2006/42/EC in the Fluid Power Industry.

All PMDE products are designed and manufactured considering the basic as well as the proven safety principles according to:

- ISO 13849-1:2015
- SS-EN ISO 4413:2010

so that the machines in which the products are incorporated meet the essential health and safety requirements.

Confirmations for components to be proven component, e. g. for validation of hydraulic systems, can only be provided after an analysis of the specific application, as the fact to be a proven component mainly depends on the specific application.

#### Dr. Hans Haas

General Manager

Pump & Motor Division Europe



### WARNING – USER RESPONSIBILITY

FAILURE OR IMPROPER SELECTION OR IMPROPER USE OF THE PRODUCTS DESCRIBED HEREIN OR RELATED ITEMS CAN CAUSE DEATH, PERSONAL INJURY AND PROPERTY DAMAGE.

This document and other information from Parker-Hannifin Corporation, its subsidiaries and authorized distributors provide product or system options for further investigation by users having technical expertise.

The user, through its own analysis and testing, is solely responsible for making the final selection of the system and components and assuring that all performance, endurance, maintenance, safety and warning requirements of the application are met. The user must analyze all aspects of the application, follow applicable industry standards, and follow the information concerning the product in the current product catalogue and in any other materials provided from Parker or its subsidiaries or authorized distributors.

To the extent that Parker or its subsidiaries or authorized distributors provide component or system options based upon data or specifications provided by the user, the user is responsible for determining that such data and specifications are suitable and sufficient for all applications and reasonably foreseeable uses of the components or systems.

### Offer of Sale

Please contact your Parker representation for a detailed "Offer of Sale".



#### Parker Hannifin Manufacturing Sweden AB

Pump & Motor Division Europe

Flygmotorvägen 2

461 82 Trollhättan

Sweden

Tel. +46 (0)520 40 45 00

[www.parker.com/pmd](http://www.parker.com/pmd)

MSG30-5511-M1/UK

© Copyright 2021

All rights reserved